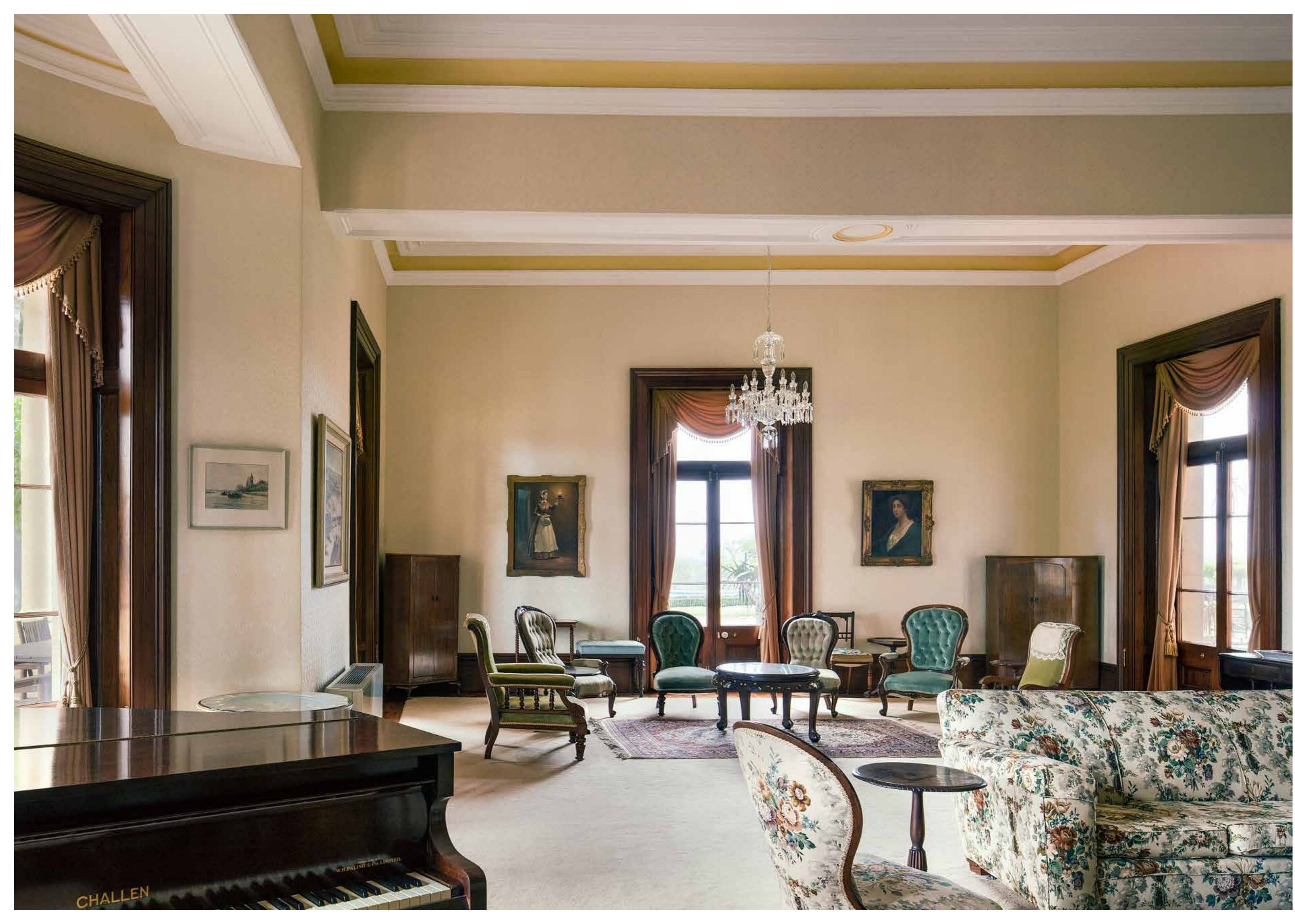


Photo shoots and filming at

JIMBOUR









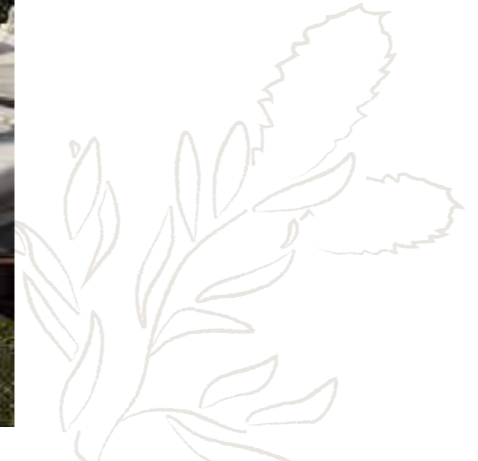
A scene-stealing location

Jimbour is an exquisite location and a beautiful historical setting for your photo shoot or film production.

A vision sprung from the plains in 1875 – ornate French doors, Tuscan columns, those wide Queensland verandahs and a roof forged from Welsh slate. Everything about Jimbour surprises, delights and intrigues. The construction and property draw you in, but the stories of these walls keep you captivated with every step.

Jimbour has a range of areas and property features available for your photographic or production needs:

- The Residence
- The Drawing Room
- The Hangar
- The Runway
- The Grand Fig Tree
- The Deborah Russell Courtyard
- The Jacarandah Drive
- The Outbuildings
- The Jimbour Chapel
- Jimbour's Gardens
- The Pool
- The Tennis Court
- The Property
- The Amphitheatre



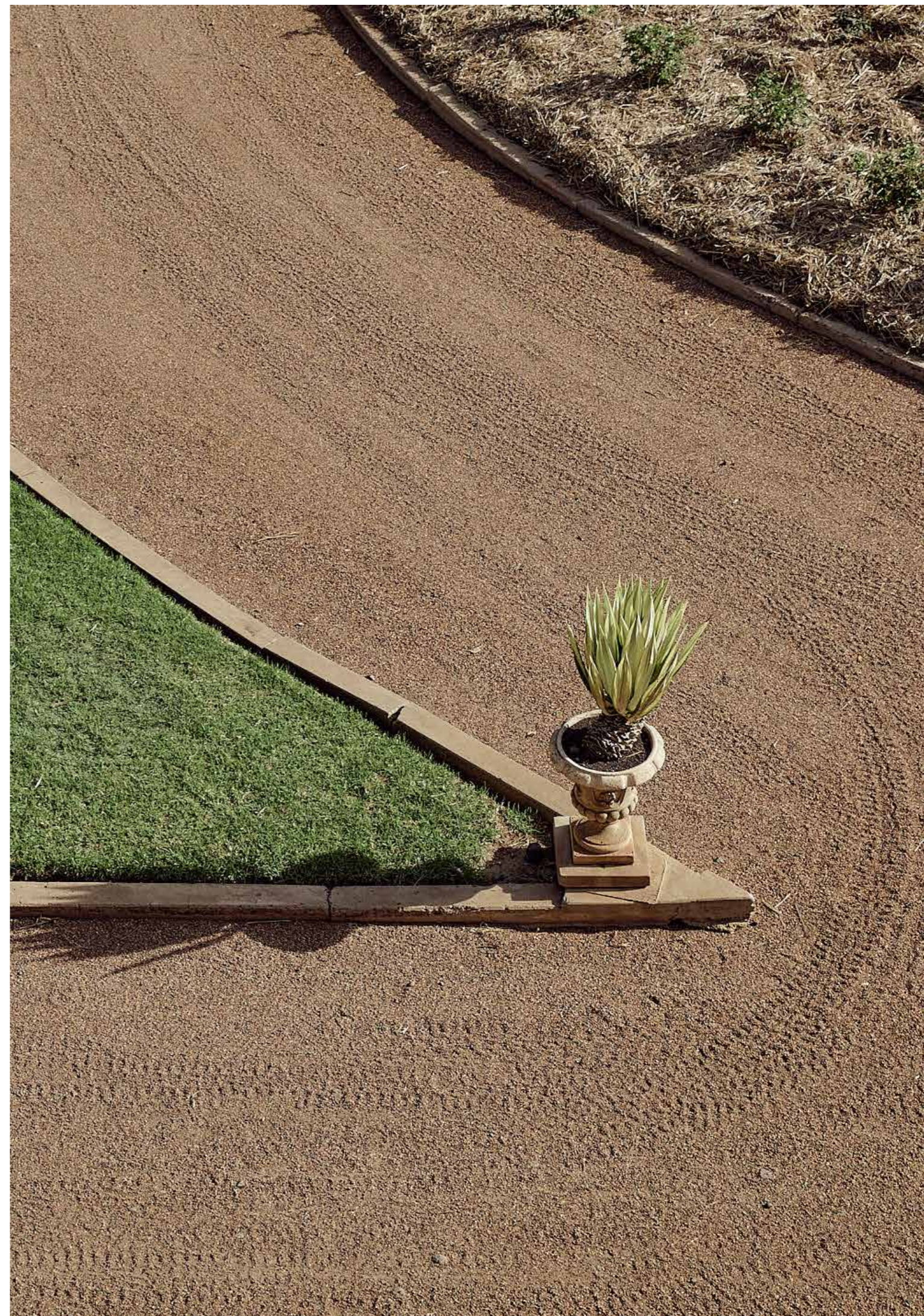
A journey through time

Jimbour and the surrounds are layered with rich Aboriginal and European histories. The people, communities and families who called Jimbour home have each added to its unique story over time. It truly is a timeless place.

Located 25 minutes from the rural Queensland town of Dalby, and three hours' drive from Brisbane, Jimbour has been featured in countless advertising campaigns, photo shoots, and as the setting for several large feature film productions, including the series *Return to Eden* and the Stan Original feature *The Second*, starring Susie Porter and Vince Colosimo.

Much of the furniture and features throughout the residence are original items from when the Russell family took ownership of the property in 1923. While not perfectly catalogued, we work hard to locate and restore as much of the property's original items as we can.

Of course, all items are available for you to use during your photo shoots or film production, but we do ask that you consult with us prior to your project about moving any particular items. They are, after all, a part of history.



The Jimbour Residence



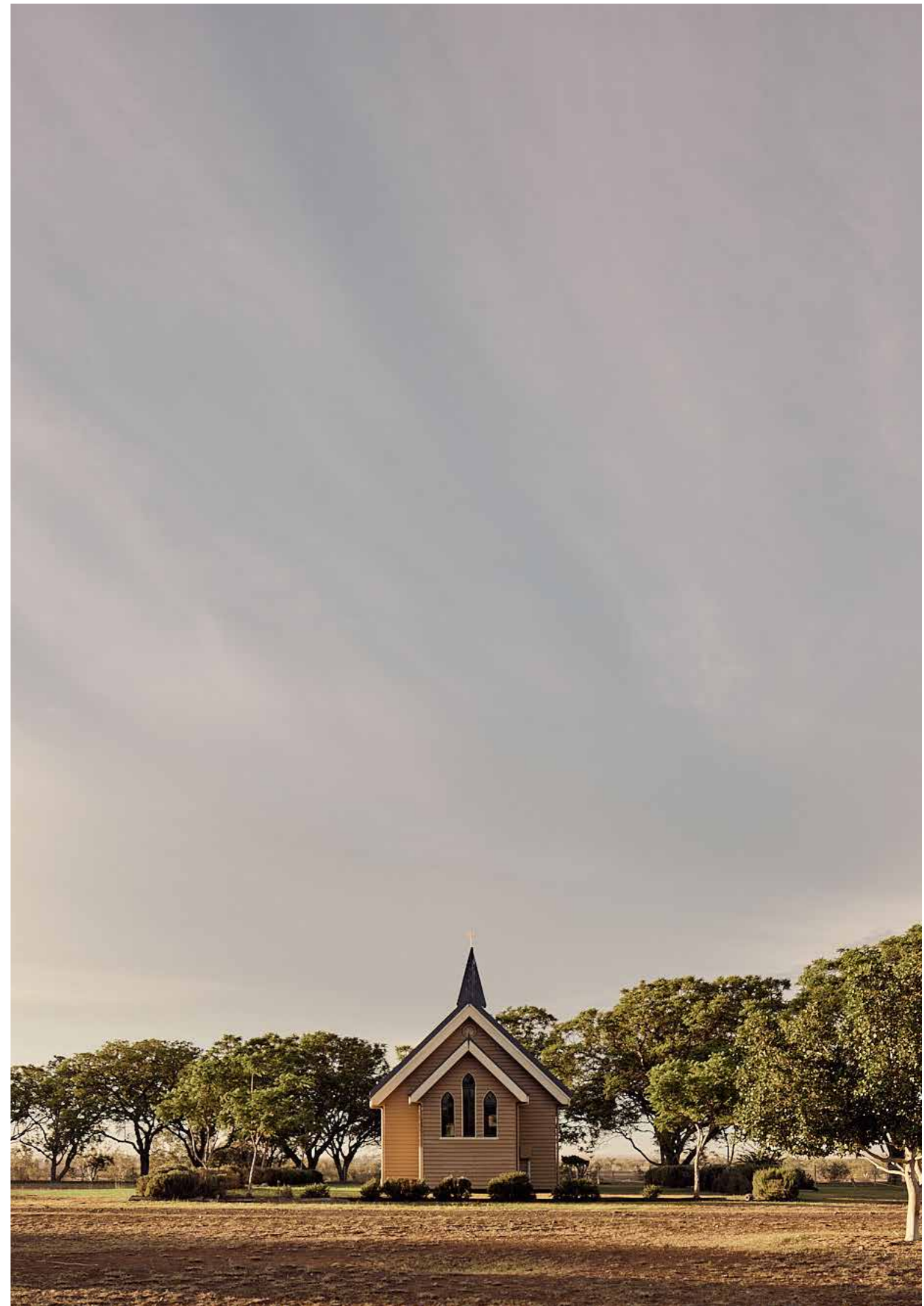
The Gardens

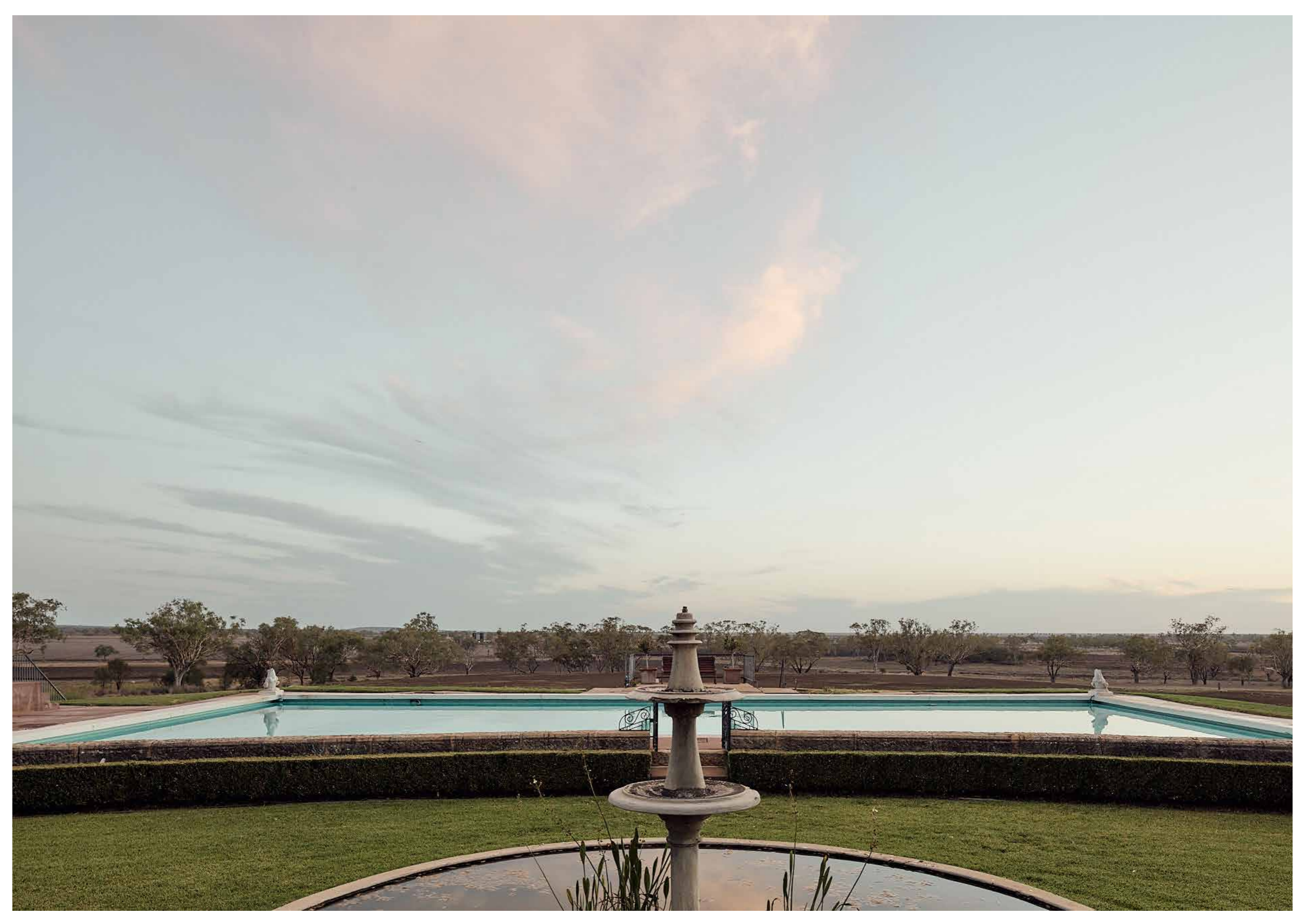




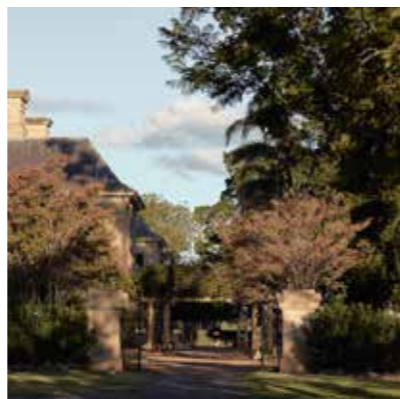


The Property and The Outbuildings





Outside The Residence





Our friendly staff will help in any way we can to make your production run smoothly.

Accommodation: There is some accommodation available on the property for cast and crew, but please get in touch to discuss your exact needs.

Trailers and equipment: There is ample space near the residence to park trailers, buses, generators and store other equipment as required.

Catering: There is a commercial kitchen on site, and we have a list of preferred catering partners who can assist with your needs.

Getting to Jimbour

By car

From Brisbane: Take Warrego Hwy and A2 to Jandowae Rd/State Route 82 to Dalby. Turn right onto Jandowae Rd/State Route 82. Continue to follow State Route 82 for 24.5 km to the Jimbour turn off.

By air

Cast and crew can choose to fly directly to the Jimbour property. Please contact us in advance to make arrangements for your arrival.

Get in touch

We're happy to answer your questions and host you for a site inspection.

Email: events@jimbour.com

Phone: 0400 558 042





JIMBOUR

